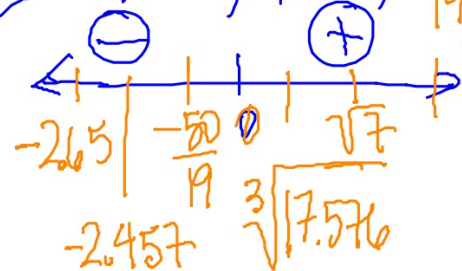


#1 part a of practice quiz

$$-\frac{50}{19}, -\sqrt{2.65}, \frac{19}{7}, \sqrt[3]{17.576}, \sqrt{7}, -2.6457, 0, \frac{19}{7}$$



★ -2.631578947 ②

★ -2.65 ①

2.714285714

✓ 2.6

✓ 2.645751311

★ -2.6457 ②

0

$$-2.65 < -2.457 < -\frac{50}{19} < 0 < \sqrt[3]{17.576} < \sqrt{7} < \frac{19}{7}$$